

# Social Security Snapshot

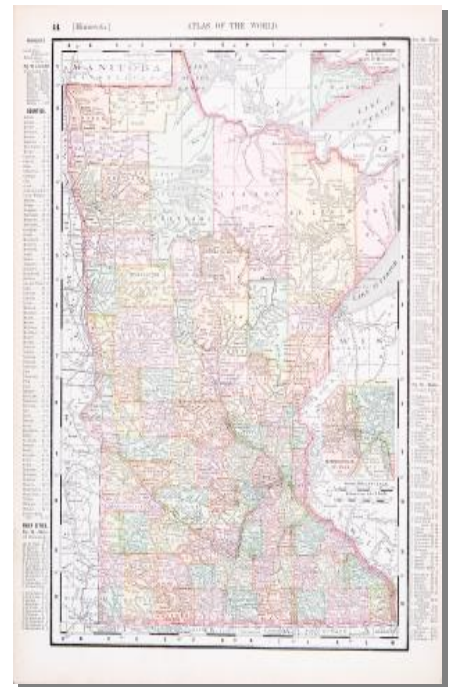
## Social Security Contributes Billion\$ to Minnesota's Economy

In Minnesota there are **965,018** Social Security beneficiaries, including:

- 680,724 Retired Workers
- 127,364 Disabled Workers
- 61,904 Widow(er)s
- 33,637 Spouses
- 61,389 Children

**Social Security benefits provide \$15 Billion  
Each year to Minnesota's economy**

Social Security provides a lifeline to beneficiaries, their families, and the local businesses which serve them. While some in Washington claim America can't afford programs like Social Security and Medicare, the truth is states like Minnesota can't afford to lose the economic benefits they provide to every community in the state.



### Minnesota Social Security Snapshot by Congressional District

Congressional District	Total Recipients	Total Annual Benefit	Retirees	Disabled	Widow(er)s & Spouses	Children
MN - 1	<b>131,597</b>	<b>\$1.9 billion</b>	94,388	15,517	13,971	7,721
MN - 2	<b>102,791</b>	<b>\$1.7 billion</b>	74,117	12,412	9,404	6,858
MN - 3	<b>112,437</b>	<b>\$1.9 billion</b>	84,021	11,367	11,075	5,974

# Social Security Snapshot



## Minnesota Social Security Snapshot By Congressional District

Congressional District	Total Recipients	Total Annual Benefit	Retirees	Disabled	Widow(er)s & Spouses	Children
MN - 4	<b>109,260</b>	<b>\$1.7 billion</b>	75,637	15,983	9,807	7,833
MN - 5	<b>95,218</b>	<b>\$1.5 billion</b>	63,563	16,858	7,912	6,885
MN - 6	<b>103,193</b>	<b>\$1.6 billion</b>	71,935	14,651	9,057	7,550
MN - 7	<b>149,594</b>	<b>\$2 billion</b>	105,183	17,707	17,765	8,939
MN - 8	<b>160,928</b>	<b>\$2.3 billion</b>	111,880	22,869	16,550	9,629